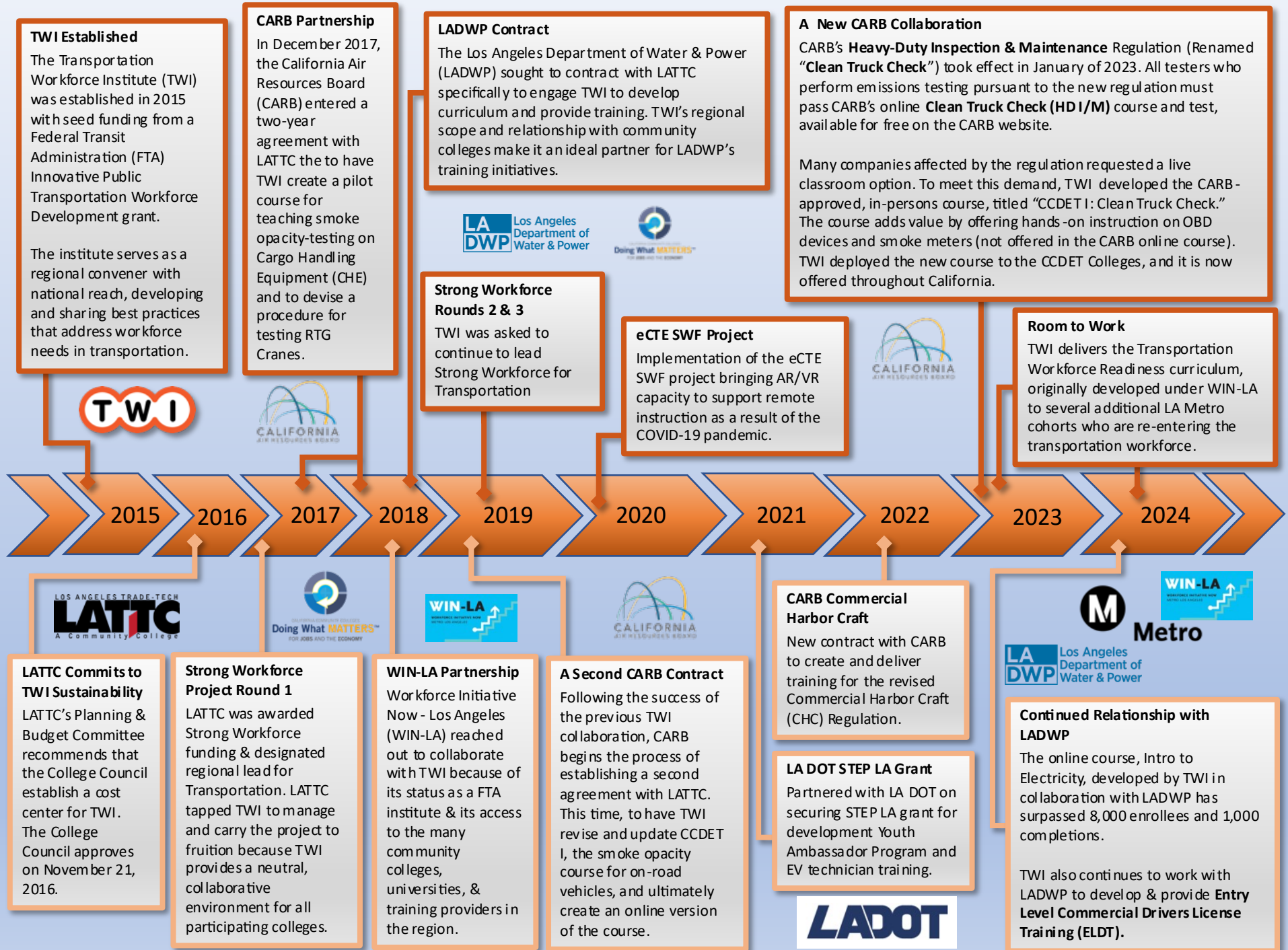
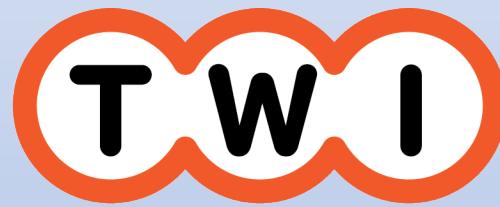


Transportation Workforce Institute Timeline

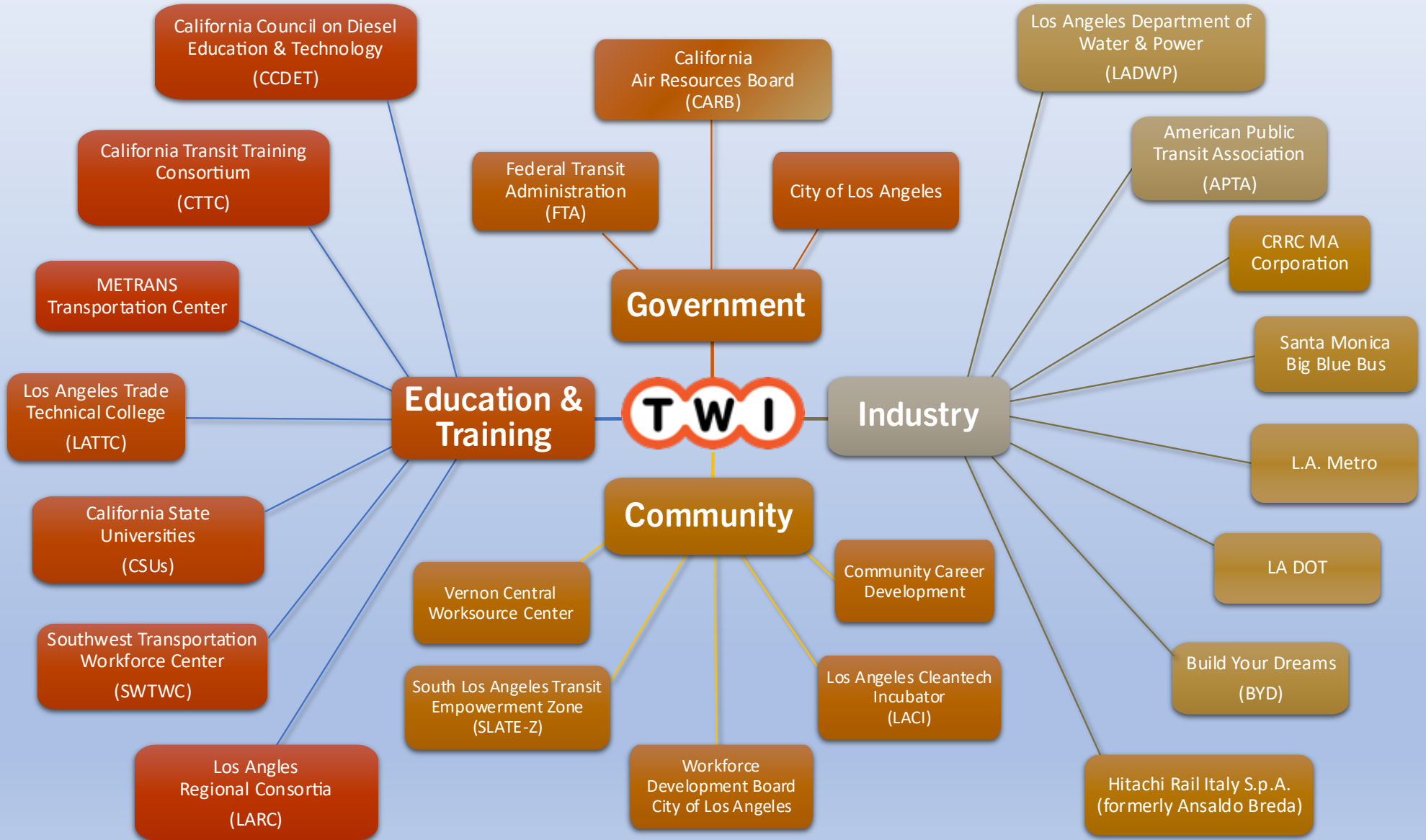




Transportation
Workforce
Institute

Transportation Workforce Institute

Connections and Collaboration



Education and Training

California Council on Diesel Education & Technology (CCDET):

A consortium of diesel truck & bus engine manufacturers & dealers, California community colleges, and the California Air Resource Board (CARB) dedicated to providing the skilled workforce necessary for clean and green transportation in California & ensure good air quality and access to education and training that sets a path to family supporting careers

California Transit Training Consortium: (CTTC):

A coalition of over 27 transit operators, community colleges and other educational institutions in Southern California, joined together to develop industry driven, competency-based curriculum that meets present and future technological needs of public transit systems.

METRANS Transportation Center:

A joint partnership of the University of Southern California (USC) and California State University Long Beach (CSULB) with a mission to solve transportation problems of large metropolitan regions through interdisciplinary research, education and outreach.

Los Angeles Trade Technical College (LATTC):

Oldest of the nine public two-year colleges in the Los Angeles Community College District. It helps to advance communities and empower students to achieve career technical certificates, associate degrees, transfer, & employment.

California State University (CSU):

A system of 23 campuses across the state of California that educates more than 480,000 students every year.

Southwest Transportation Workforce Center (SWTWC):

Seeks to connect and empower the 21st century transportation workforce through research, education, & industry engagement. The Federal Highway Administration (FHWA) funded the launch of SWTWC in concert with four other regional centers that form the National Network for the Transportation Workforce. Each center is dedicated to providing a more strategic and efficient approach to transportation workforce development.

Los Angeles Regional Consortium (LARC):

Provide local and regional decision makers with the increased capacity to measure regional progress toward goals of efficiency and effectiveness, while also improving their access to indicators that measure student/incumbent worker progress through the educational system.

Government

California Air Resources Board (CARB):

Charged with protecting the public from the harmful effects of air pollution and developing programs and actions to fight climate change.

City of Los Angeles:

Often known by its initials L.A., is the most populous city in California and the second most populous city in the United States, after New York. With an estimated population of four million, L.A. is the cultural, financial, and commercial center of Southern California (source Wikipedia). The General Services Department (GSD) manages facilities, equipment, and other support services to City departments, manages parks and recreation, and road repair.

Federal Transit Administration (FTA):

The Federal Transit Administration (FTA) provides financial and technical assistance to local public transit systems, including buses, subways, light rail, commuter rail, trolleys and ferries. FTA also oversees safety measures and helps develop next-generation technology research.

Community

Community Career Development (CCD):

A nonprofit organization, which contracts with the City and County of Los Angeles Workforce Development Boards to operate the Wilshire Metro, Compton & South Los Angeles WorkSource Centers/America's Job Centers of California. CCD provides free employment services to 20,000+ adult & 500+ youth job seekers each year.

Vernon Central Worksource Center:

Provides free services for jobseekers, including a job board for immediate openings with local employers, free internet access, printers and communication tools, interview preparation, resources for laid off workers, job fairs, etc.

Workforce Development Board City of Los Angeles

Delivers and promotes services to create a trained workforce with access to good jobs, which will lead to the development of a strong regional economy, which will lead to the development of a strong regional economy.

Industry

L.A. Dept. of Water & Power (LADWP):

The largest municipal water and power utility in the nation delivers reliable, safe water and electricity to 4 million residents & businesses in Los Angeles.

American Public Transportation Assn. (APTA):

A nonprofit organization which serves as an advocate for the advancement of public transportation programs and initiatives in the United States.

CRRC MA Corporation:

A leader in railcar manufacturing & green transportation, CRRC produces high speed trains, mass transit, passenger coaches, wind power equipment, engineering machinery.

Santa Monica Big Blue Bus:

A municipal bus operator in the Westside region of Los Angeles County, that provides local and bus rapid transit service in Santa Monica and adjacent neighborhoods of L.A.

L.A. Metro:

The Los Angeles County Metropolitan Transportation Authority operates public transportation in the L.A. metropolitan area. Metro directly operates bus, light rail, heavy rail and bus rapid transit services. It provides funding & planning for rail & freeway projects within L.A. County.

Build Your Dreams (BYD):

A high-tech company devoted to technological innovations in industries related to electronics, automobiles, new energy and rail transit. BYD is dedicated to providing zero-emission energy solutions.

Hitachi Rail Italy S.p.A (formerly Ansaldo Breda):

Hitachi Rail Italy S.p.A. is a rail transport engineering company based in Italy whose main products are the design and manufacturing of railway and mass transit vehicles.

LA DOT

LADOT's mission is to lead transportation planning, project delivery, and operations in the City of Los Angeles.